



## Elder Douglas Lowe

April 18, 1958 - January 22, 2017

Elder Douglas Lowe, a longtime pastor of Lowe's Temple, known for his outgoing personality and visionary leadership, departed this life and stepped into his eternal life on Sunday Morning at age 58, at his residence. He was born April 18, 1958. He was the son of the late Clifton and Helen Anderson Lowe in Tylertown, MS. He was married to Mrs. Annie Lowe.

Services will be held Saturday, January 28 at 1 pm at Dillon Hill Church of God in Christ in Tylertown with burial to follow in Tylertown City Cemetery in Tylertown, MS. Visitation is Friday from 12noon - 3pm at Craft-Ginn Funeral Chapel and continue 5pm until 8pm at Lowe's Temple COGIC in Tylertown, MS. Craft-Ginn Funeral Chapel is in charge of the arrangements.

He attended school at J. J. Gullledge in Tylertown, MS; and was a graduate of Dexter High School Class of 1978, where he was well known for his athletic ability. He attended Southwest MS Community College on a football scholarship and received his degree in Auto Mechanics.

On September 20, 1980, he married the love of his life, Annie Jackson for 36 1/2 years of blissful matrimony. To this union, two lovely children were born, Helen DeAnna Lowe and Evelyn Denise Lowe. Later in life, they were blessed with a son Jamas Kenyale Ishman.

Pastor Lowe was a very dedicated worker. He worked in retail sales as a account manager for the Big City Rentals Corporation for 27 years until the business closed. Afterwards, he became an account manager for Circle T.

Pastor Lowe was called into the ministry in 1990 under the leadership of the late Elder John Smith. He received his ministerial licenses on March 16, 1996. and was ordained as an Elder on September 29, 2001 and appointed as Pastor of Lowe's Temple Church of God in Christ in Tylertown, MS; on March 15, 2002, and served faithfully until his death. He was a heavy-weight soul winner for the kingdom of God who loved everyone and met no stranger.

Pastor Lowe was preceded in death by his parents: Clifton Lowe and Helen Anderson; one sister, Leotha Smith-Magee, a special aunt Alma Jean Pittman "Nanny".

He leaves to cherish his memory a devoted wife, Annie Lowe; two daughters, Helen (Tyler) Barnes of Magee, MS; Evelyn Lowe, Foxworth, MS; one son, Jamas Kenyale Ishman , Foxworth, MS; one granddaughter, Kenleigh Barnes; three brothers, Joe (Tommie Jean) Smith, Oakvale, MS; Wilford (Lerlene) Lowe, Tylertown, MS; C.L. (Debra) Lowe, Columbia, MS; one sister, Ora (Lavonne) Sanders, Chicago, IL; uncle, Elder Johnny Lowe, New Orleans, LA; 12 god-children, host of nieces, nephews, other relatives and friends as well as his church family.

Please share online condolences at [www.craftfuneralhome.org](http://www.craftfuneralhome.org)

# Cemetery Details

**Tylertown City**

## Previous Events

### Visitation

**JAN 27.** 12:00 PM - 3:00 PM (CT)

Craft-Ginn Funeral Chapel  
219 Highway 98 West,  
Tylertown, MS 39667  
(601) 876-5175  
craft.ginn98@gmail.com  
<https://info@craftfuneralhome.org>

### Visitation

**JAN 27.** 5:00 PM - 8:00 PM (CT)

Lowe's Temple COGIC  
15 Lees Chapel Road  
Tylertown, MS 39667

### Service

**JAN 28.** 1:00 PM (CT)

Dillon Hill COGIC  
62 Dillon Hill Road  
Tylertown, MS 39667  
(601) 876-6494

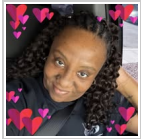


# Tribute Wall



“ *Elder Douglas Lowe*

October 09, 2023 at 08:24 AM



“ *Tracy Smith purchased the With Deepest Sympathy Gift Basket for the family of Elder Douglas Lowe.*



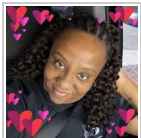
Tracy Smith - January 27, 2017 at 10:04 AM



“ *Tracy Capers sent a virtual gift in memory of Elder Douglas Lowe*



Tracy Capers - January 27, 2017 at 04:12 AM



“ *Dad you will be miss I love you so much and will miss you...my condolences go out to the lowes family and my family prayers our with you'll at this time. Love you dad...RIH*



Tracy Smith - January 27, 2017 at 03:37 AM

TS

“ *We send our condolences out to the Lowes family. Our prayers are with you always and we will miss papa and dad.*



---

**Tracy Smith** - January 27, 2017 at 02:56 AM

AI

“ Dear Lowe and Smith Families:

*The Abundant Life Outreach Ministries family is saddened to learn of the passing of Elder Douglas McArthur Lowe. It is with heartfelt sympathy that we extend our condolences during your time of bereavement. Be assured that we are praying and interceding for your family.*

*I want to remind you of the words from Psalm 18:2, "...the Lord is my rock, and my fortress, and my deliverer, my God, my strength, in whom I will trust; my buckler, and the horn of my salvation, and my high tower..." The Lord is there for you and He will not abandon you. In Him, you will find strength, salvation, and compassion to face the coming days. For the Father will comfort and keep you during this time of bereavement.*

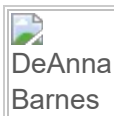
*Jesus came to heal the brokenhearted and has promised you everlasting consolation and hope through His grace. Trust in the Father's faithfulness with your whole heart and lean not to your understanding (Proverbs 3:5). Acknowledge Him in all your ways and He shall direct your path (Proverbs 3:6).*

*As we continue to pray the Father's perfect and direct will for you and your family, I pray that you will stand still and know from whence your help cometh. Be blessed knowing that you are not alone.*

*In His Service,  
Pastor Dr. Eddie L. Jones, Sr.*

---

**Abundant Life Outreach Ministries, Inc.** - January 26, 2017 at 01:38 PM



*Thank you so much! From the daughter of Elder Douglas Lowe*

---

**DeAnna Barnes** - February 16, 2017 at 08:10 AM

AR

“ *Angela Rubio lit a candle in memory of Elder Douglas Lowe*



---

**Angela Rubio** - January 26, 2017 at 11:58 AM

KB

“ *Krystal Brown lit a candle in memory of Elder Douglas Lowe*



---

**Krystal Brown** - January 26, 2017 at 08:24 AM



“ *Our staff will continue to keep your family in our prayers. We thank you for allowing us to serve your family during this difficult time.*  
~~~~*Craft Funeral Home & Craft-Ginn Funeral Chapel*

---

**Crystal Renee Hollins** - January 23, 2017 at 11:45 AM